



Capability Statement

Goldfields Hoist and Crane



GOLDFIELDS
HOIST AND CRANE

- 24 Hour Service
- Wire Rope Hoists
 - Chain Hoists
- Safety Audits
 - Training
- Accessories



17 July 2011

Welcome to Goldfields Hoist and Crane,

If you are reading this it is because you have identified a need for Hoist and Crane related services in your organisation. What follows is a detailed account of our history, capabilities and vision.

From the beginning in November 2010 we established ourselves as a specialist in Hoist and Cranes; providing statutory inspections, repairs and installation of Overhead, Davit, Monorail Wire Rope and Chain Hoists. We also specialise in the sale of new cranes and hoist and the supply of spare parts for all makes of cranes.

Goldfields Hoist and Crane are able to meet your business needs resulting in quality outcomes and solutions to meet your needs. Our Team are highly professional and experienced and ready to work with you.

If you have any questions please do not hesitate to contact us directly. We look forward to working with you more closely.

Kind Regards

Mark Walters
Director
Ph – 0448 797 445

Paul Bolitho
Director
Ph – 0439 450 096

CAPABILITY STATEMENT

CONTENTS

Contents	Page
Company Information	4
Products and Services currently offered	5
Key Staff	6
Our Clients	7
Organisational Structure	7
Why Choose Goldfields Crane and Hoist	8
Our Key Projects and Service Outcomes	9
Operating Obligations	10

CAPABILITY STATEMENT

1. Company Information

1.1 Full Legal Name

Goldfields Hoist And Crane Pty Ltd

1.2 Trading name

Goldfields Hoist and Crane

1.3 Business Structure

Company

1.4 ABN

671 474 224 91 active 17 November 2010

1.5 ACN

147 422 491

1.6 Address

170a Boulder Road
Kalgoorlie, WA 6430

1.7 Sales Point of Contact

sales@goldfieldshc.com.au

1.8 Accounts Point of Contact

Accounts@goldfieldshc.com.au

1.9 Management Point of Contact

Mr Mark Walters
Director

P: +61 8 6188 0120

F: +61 8 9022 9883

M: +61 448 797 445

Email: markw@goldfieldshc.com.au

Mr Paul Bolitho
Director

P: +61 8 6188 0120

F: +61 8 9022 9883

M: +61 439 450 096

Email: paulb@goldfieldshc.com.au

1.10 Years of operation

7 years

CAPABILITY STATEMENT

2. Products & Services currently offered

2.1 Services

- Service and statutory inspections on Overhead Travelling Gantry Cranes, Post Cranes, Portal and Semi Portal Cranes, hoists and winches
- 24 hour 7 day a week breakdown assistance and repairs
- Training in the safe use of Overhead Cranes
- Modification, upgrades, engineering support and overhauls to existing cranes
- Site measurement and sale of new cranes
- Advice to customers wanting new cranes
- 10 and 25 year statutory inspection
- **Rail survey, alignment and repairs**

2.2 Products

- Full installation, load testing and commissioning
- Overhead Cranes
- Davit Cranes
- Monorail Wire Rope and Chain Hoists
- New Cranes & Hoists
- Spare parts for all makes of cranes

CAPABILITY STATEMENT

3. Key Staff

We maintain a committed team which has a combined experience spanning over 62 years.

Mark Walters:

Working Director



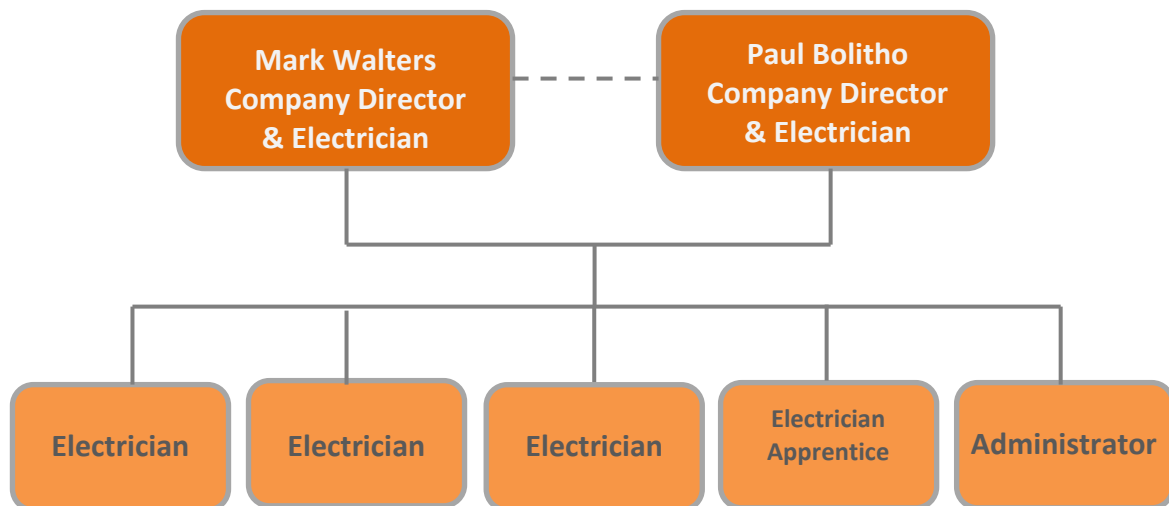
Mark Walters has more than 32 years' experience working in the Electrical trade in a range of positions including Leading Hand Electrician, Electrician, Electrical Manager, Self-Employed Electrical Contractor, Crane Technician Branch Manager and working Director. Mark's role includes conducting inspections, installations and commissioning, faults and repairs, scheduling and planning of works, statutory inspections, customer development and business management.

Paul Bolitho:

Working Director



Paul Bolitho has 27 years' experience working in the Electrical trade in a range of positions including Electrical Technician, Fitter, Test and Commissioning Electrical Technician, Crew Leader, Service Technician and Installation & Commissioning Manager. In addition to his extensive electrical training Paul has also undertaken a Cert III in Frontline Management, Cert IV in Workplace Training and Assessment and a Cert IV in Higher Engineering Studies (Instrumentation) Paul also has 25 years' service in the Australian Defence Force corps of RAEME.



CAPABILITY STATEMENT

4. Our clients

We like to consider our clients as a part of our team. Here are some of the clients we have delivered our services to.



CAPABILITY STATEMENT

5. Why choose Goldfields Hoist And Crane

We pride ourselves on our fast attendance to break downs and urgent repairs. We understand that while machinery is not in operation it is a considerable inconvenience to our clients and we focus on ensuring that our clients “down time” is always kept to a minimum. We also ensure that services are carried out on time and accurately and provide reports to ensure that should any repairs or replacement parts be necessary, we are able to provide and carry out the additional works as soon as possible to avoid breakdowns and maintain smooth running of your operations.

We carry a reasonable amount of stock in our Kalgoorlie workshop to cover urgent break downs and repairs. Should you require specific long lead time parts and accessories to be kept on hand, we would be will to come to an arrangement.

We have reputable relationships with numerous suppliers which assist us in being able to acquire any parts required quickly. Our suppliers are generally able to deliver goods to us within a 24 hour period.

Some of our clients require us to provide on-site shut down coverage in case of crane break downs. Should this be required we are happy to discuss options for providing this service.

Taking into consideration that we do hold contracts that require considerable travel time to reach, we ensure that we always have a minimum of one licensed technician available in Kalgoorlie for purpose of break downs and urgent repairs.

We are extremely confident that we can provide you with the best service possible and we pride ourselves on the following business attributes:

- Friendly Service
- Highly Skilled Staff
- Fast, Reliable Service
- Cost Effective, Flexible solutions
- Product Knowledge
- Excellent Industry Knowledge
- Good Reputation for delivering a high quality service
- Excellent Supplier Relationships
- Excellent After-Sales Service
- Availability of qualified tradesmen
- Local knowledge
- Locally owned and operated
- Client Focused

CAPABILITY STATEMENT

6. Our key contracts and service outcomes

Since its establishment Goldfields Hoist and Crane have delivered a number of outcomes to our satisfied clients. Here are a few examples of our work.

Client	Products & Services Provided	Value
AngloGold Ashanti Australia	Sales, Service and Repair	\$189,500
Avoca Mining	Sales, Service and Repair	\$114,500
Barrick Australia	Sales, Service and Repair	\$359,700
BGC Contracting	Sales, Service and Repair	\$56,000
BHP NiW	Sales, Service and Repair	\$600,000
Boyes Mechanical	Sales, Service and Repair	\$16,400
Evolution Mining (formally Catalpa Resources)	Sales, Service and Repair	\$91,900
Focus Minerals	Sales, Service and Repair	\$44,600
HBJ Minerals (a division of Alacer Gold)	Sales, Service and Repair	\$24,500
IES Resources	Sales, Service and Repair	\$11,000
Integra Mining	Sales, Service and Repair	\$125,300
Jabiru Metals	Sales, Service and Repair	\$50,900
KCGM	Sales, Service and Repair	\$1,211,200
LaMacha	Sales, Service and Repair	\$12,500
Lanfranchi Nickel	Sales, Service and Repair	\$33,500
Minara Resources – Murrin Murrin Operations	Sales, Service and Repair	\$150,800
Navigator (Bronzewing)	Sales, Service and Repair	\$90,000
Regis Resources	Sales, Service and Repair	\$27,000
Sandvik Mining and Construction Australia	Sales, Service and Repair	\$76,500
Saracen Gold Mines	Sales, Service and Repair	\$56,200
Specialised Engineering Services (WA)	Sales, Service and Repair	\$24,100
St Barbara	Sales, Service and Repair	\$154,700
St Ives Gold Mining Company (Pty) Ltd	Sales, Service and Repair	\$316,500
Water Corporation	Sales, Service and Repair	\$134,700
Xstrata Nickel Australasia Operations	Sales, Service and Repair	\$39,400

7. Organisational Obligations

7.1 Work Cover Registration numbers

- WA Work Cover 09516590

7.2 Other Licenses

- Electrical Contractors EC 10287
- Working at Heights

7.3 Insurance Details

- Public Liability Insurance \$20,000,000.00
- Industrial Disease Insurance \$ unlimited
- Vehicle Insurance Third Party \$30,000.00

7.4 Staff Development

Training needs are identified for each staff member and training is provided on an as required basis.

7.5 OHS

With regard to Safety on site, Goldfields Hoist and Crane require that all technicians undertake regular medicals and drug and alcohol screening. We ensure that all technicians hold relevant and required qualifications and training to complete the tasks required of them. Employees are restricted to 12 hour door to door shifts.